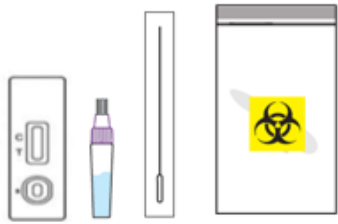


Self Test Quick Reference Instructions

BNG® SARS-CoV-2 Antigen Rapid Test

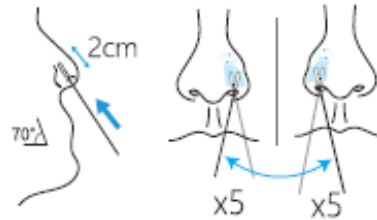
The BNG® SARS-CoV-2 Antigen Rapid Test is for prescription use at home and other non-laboratory sites and/or over the counter (OTC) use at home and other non-laboratory sites. It is important to read the instruction for use carefully and follow the steps in the correct order. It takes about 15 minutes to prepare before each test, and the results can be obtained after 30 minutes. Please use the test kit at room temperature (15-30 °C). If the test kit was previously stored in a cool place (temperature below 15 °C), please balanced at 15-30 °C for 30 minutes before test.

1.



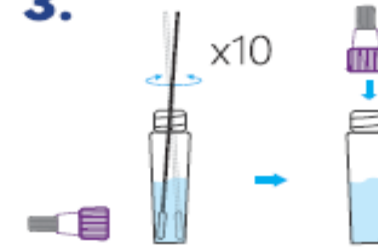
1- Check the components in the box and verify that there is not any damage or breakage. Wash or sanitize your hands.

2.



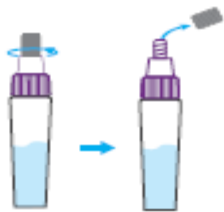
2- Insert swab soft head into nostril less than 1 inch (Usually 1/2 or 3/4 of an inch). Gently rotate the swab against the nasal wall with moderate force at least five times.

3.



3- Take out the extraction tube, dip the swab soft head the extraction solution. Press the swab soft head tightly against the inner wall of the extraction tube, and rotate the swab clockwise or anticlockwise for about 10 times.

4.



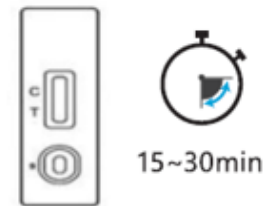
4- Tighten the tube cap for stand by times.

5.



5- Gently, squeeze the extraction tube, and drop 2 drops of liquid vertically into the sample well of the test card.

6.



6- Start timing, read the results at 15 minutes. Do not read results before 15 minutes or after 30 minutes.

7.

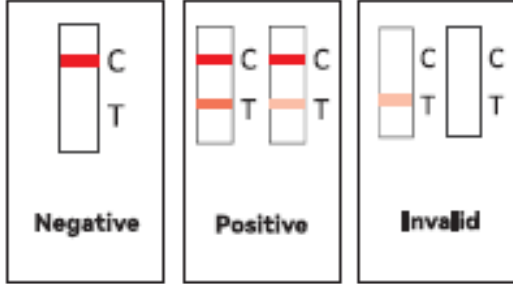


7- After test is completed, put all the test kit materials into the biohazard waste bag and dispose it according to the local biohazard waste disposable policy.

Self Test Quick Reference Instructions

BNG® COVID-19 Antigen Rapid Test

8.



8- Negative: The quality control line (C line) appears red band, while the test line (T line) doesn't appear red band.

Positive: Both the quality control line (C line) and the test line (T line) appear red bands.

Invalid: Once the red line in the control line (C line) region doesn't appear which will be treated as invalid.

Warning!: Invalid results may indicate that you did not strictly follow the operation steps of instruction for use. Please read the instruction carefully again and select a new kit for testing again.

If the results positive; Persons who test positive should self-isolate and seek follow up care with their physician or healthcare provider as additional testing and public health reporting may be necessary.

If the results negative;

- Please note that negative results do not rule out COVID-19.
- In case of negative test result: Continue to follow all social distancing recommendations and take protective measures. If suspicions of infection persist and/or your first test is negative, repeat the test after 1 - 2 days and consult your healthcare provider or local COVID-19 center.
- Note: A negative result is presumptive and confirmation with a molecular assay, if necessary, for patient management may be performed.

